

# **WELCOME PACK**

## **INFORMATION BOOKLET**

### **FOR**

## **INTERNSHIP SCHOOL 2008**

**Technologies for Embedded Computing (TEC) Centre**  
**B294 Department of Electronic Engineering**  
**Cork Institute of Technology**  
**Rossa Avenue, Bishopstown,**  
**Cork, IRELAND.**



# TABLE OF CONTENTS

<b>1. FROM THE CORK AIRPORT.....</b>	<b>2</b>
<b>2. ACCOMMODATION.....</b>	<b>2</b>
<b>3. IMPORTANT THINGS TO DO AFTER ARRIVAL IN IRELAND</b>	
<b>3.1. Opening a Bank Account.....</b>	<b>3</b>
<b>3.2. Personal Public Service Number.....</b>	<b>3</b>
<b>3.3. Garda (GNIB) Registration .....</b>	<b>4</b>
<b>4. WEATHER IN CORK.....</b>	<b>5</b>
<b>5. SHOPPING.....</b>	<b>5</b>
<b>6. MOBILE PHONE SERVICE PROVIDERS.....</b>	<b>6</b>
<b>7. BUSES RUN FROM CIT.....</b>	<b>6</b>
<b>8. VISA INFORMATION.....</b>	<b>7</b>
<b>9. Grocery Shops for vegetarians.....</b>	<b>7</b>

## 1. FROM THE CORK AIRPORT

You can hire a taxi from Cork Airport and show the address below to the taxi driver so that he can drop you at your accommodation.

**Edenhall @ the village**  
**Model Farm Road,**  
**Bishopstown, Cork**

Edenhall is almost 15 minutes away by drive from Cork Airport and will cost you around € 17. We will send you the booking details of your accommodation two weeks before your arrival here in Cork. You can contact Edenhall administration office with these booking details and they will guide you to your room.

## 2. ACCOMMODATION

We have arranged student accommodation in the close vicinity of CIT campus for all interns of TEC Centre's summer school 2008. The property name is **Eden Hall @ the village**. Each room is single bed with en-suite facility and broadband internet point. If you accompanying laptop then you can also bring an RJ-45 ethernet cable as well. Edenhall is approximately 15 minutes walk away from TEC Centre. Please look at the thick red line shown in Figure 1 below which shows the pedestrian walk-way through Parchment Square student accommodation. Usually it opens from 8:00am to 10:00pm from Monday to Friday. Further information about the accommodation can be found on their web site: <http://www.edenhall.ie/>

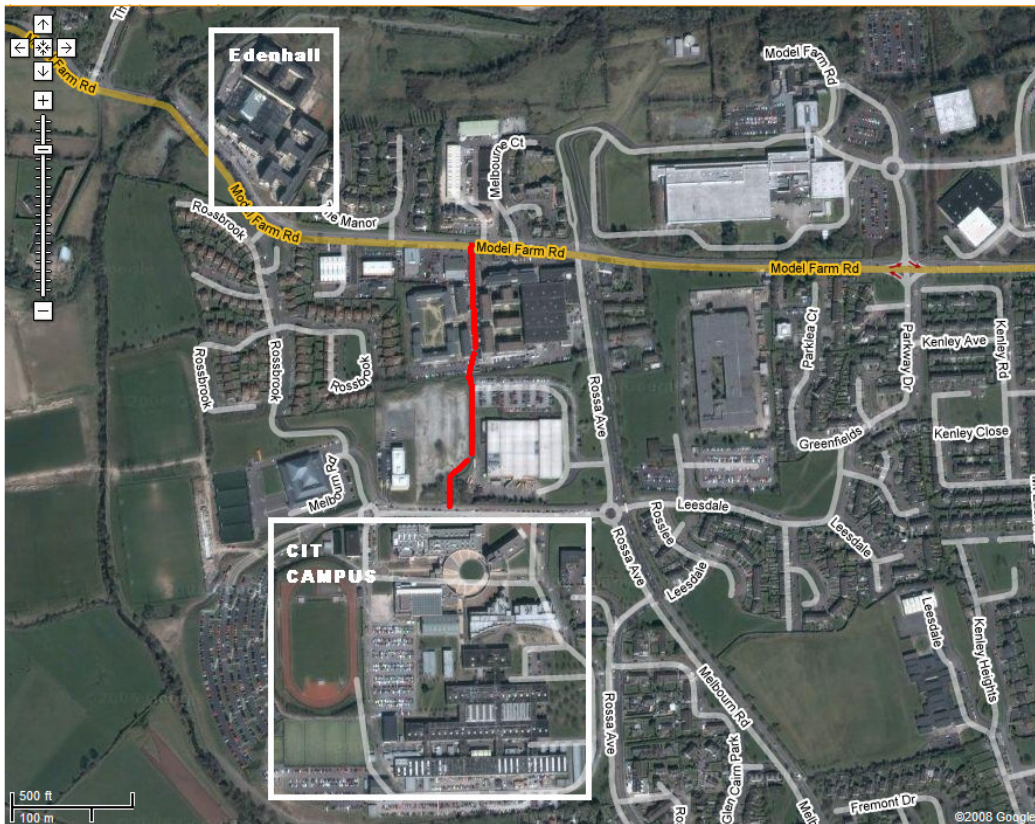


Figure 1: Edenhall location from CIT

### **3. IMPORTANT THINGS TO DO AFTER ARRIVAL IN IRELAND**

Once you arrived here in Cork, you have to do following important registrations as soon as possible.

#### **3.1. Opening a Bank Account**

The first thing you need to do is to open a student bank account in any Irish bank after your arrival here in Cork, as all your stipends will be paid to you through this bank account. We have two banks available in CIT campus:

- **Allied Irish Bank (CIT Branch)**  
**Student Centre Building,**  
**CIT, Cork**  
<http://www.aib.ie>
- **Bank of Ireland (CIT Branch)**  
**Student Centre Building,**  
**CIT, Cork**  
<http://www.boi.ie>

You can select any one of them where you can easily open a student account (current account). The bank will issue you a Laser Debit card which you can use at ATM for cash withdrawal or at any POS counter supported by Laser.

#### **Documents Required:**

- Your Original Passport
- Letter from TEC Centre mentioning your purpose of stay and address in Cork
- Letter from Edenhall management confirming your address. (Proof of Address)

For further details of documentation please contact to concerned bank.

#### **3.2. Personal Public Service Number (PPS No.)**

Second thing you require to do is to get a PPS number which is mandatory for any one who lives in Ireland. It will also be required by the CIT payroll system for your monthly stipends. PPS number usually issued within one week after the receipt of application.

#### **Documents Required:**

- Your Original Passport
- Letter from TEC Centre mentioning your purpose of stay and address in cork
- Letter from Edenhall management confirming your address.

You can find further information required to apply for PPS number on its official web site at: <http://www.welfare.ie/topics/ppsn/index.html>

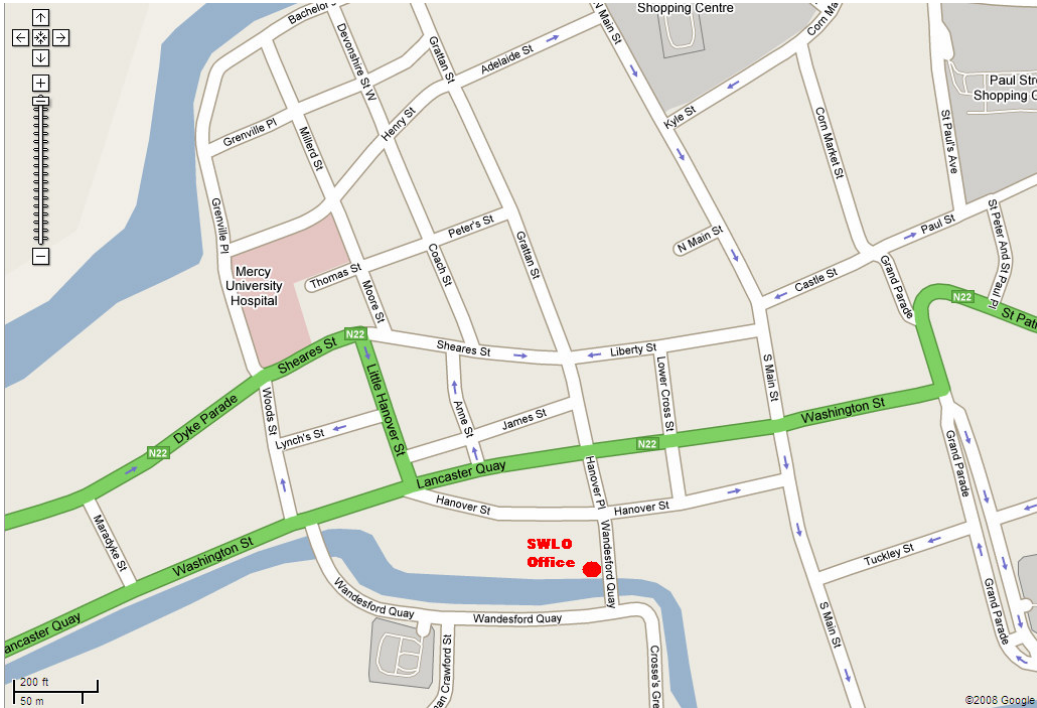
The address and location map of Irish Social Welfare Office in Cork city is below:

**Social Welfare Local Office (SWLO)**

**Hanover Quay,**

**Cork.**

**Tel: (021) 4270055**



**Figure 3: SWLO Location from Washington Street**

### **3.3. Garda (GNIB) Registration:**

All students who are not Citizens of a member State of the European Union, the European Economic Area or Switzerland must register with Garda (Police) National Immigration Bureau GNIB as soon as they arrived in the state. Once you registered, GNIB will issue you a registration card valid to the same date as your student visa.

#### **Documents Required:**

- Your Original Passport
- Letter from TEC Centre mentioning your purpose of stay and address in cork
- Letter from Edenhall management confirming your address.
- € 100 fee which should be paid via Debit Card or Bank Giro.

You can get the up-to-date information about GNIB registration processes, required documents and fee on GNIB official website at: <http://www.garda.ie/gnib.html>

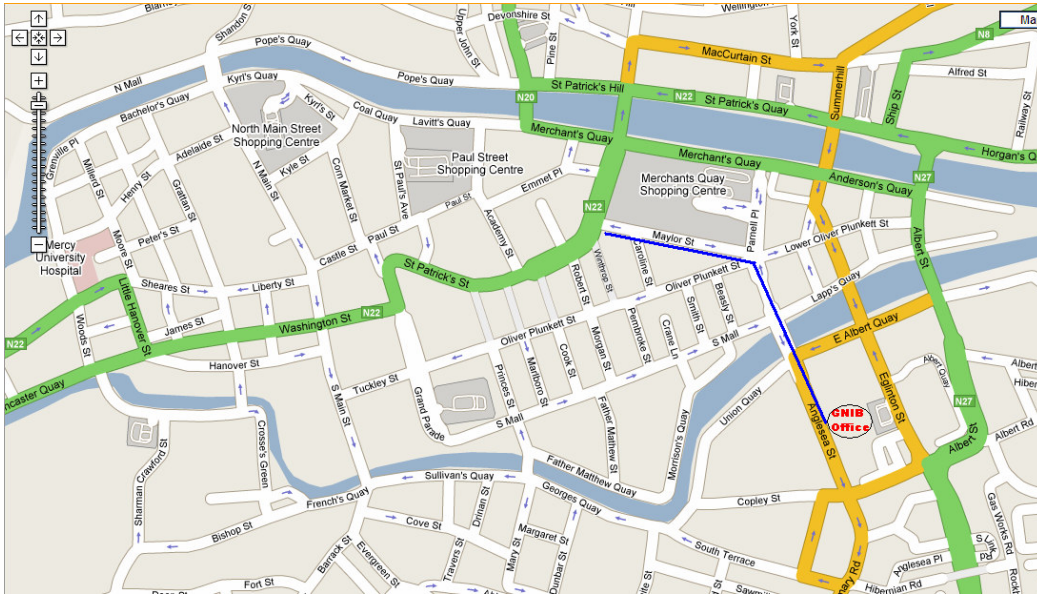
The address of GNIB office here in Cork and location map (Fig.2) are given below

**GARDA National Immigration Bureau (Regional Office)**

**Anglesea Street,**

**Cork.**

**Tel: 021 - 4522000**



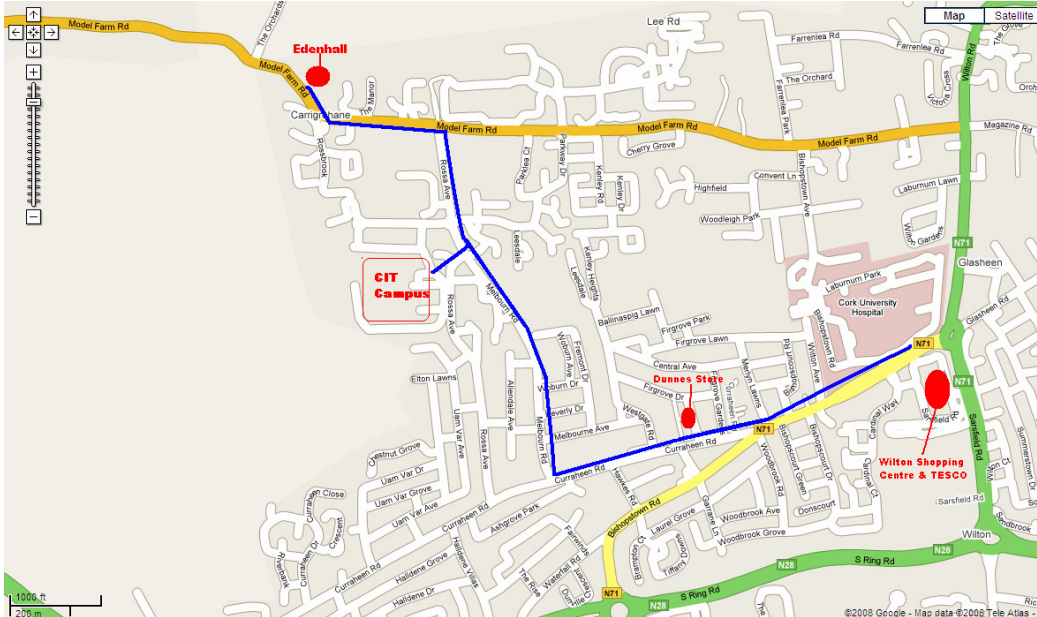
**Figure 2: GNIB location from St. Patrick Street**

#### **4. WEATHER IN CORK**

Weather in Cork is quite uncertain, usually cloudy and rainy so it would be good to bring rain coat or waterproof jackets with hoods. You can find more about the Cork weather at: <http://www.ireland.com/weather/cities/cork.html>

#### **5. SHOPPING**

The nearest shopping stores to CIT campus are The Dunnes Store in Bishopstown and the Wilton Shopping Centre (WSC) including the TESCO Supermarket. You can find almost every thing required for daily usage like food items, newspapers, garments, Optician, Pharmacy, Post Office, etc. from these shopping places. The map pointing the locations of these shopping centres is mentioned in figure 4.



**Figure 4: Location of Dunnes and WSC/TESCO from CIT**

There are other big shopping centres in the city centre at and around St. Patrick Street.

## **6. MOBILE PHONE**

There are three main mobile companies operating here in Ireland.

Vodafone – <http://www.vodafone.ie>

O<sub>2</sub> – <http://www.o2.ie>

Meteor – <http://www.meteor.ie>

Outlets of all the three vendors mentioned above are available in WSC from where you can purchase any suitable package (pay as you go or monthly) or even a SIM card if you already have a 3G mobile phone. O<sub>2</sub> and Vodafone have some very cheap international call packages. You can check all packages at their websites.

## **7. BUSES RUN FROM CIT**

There are two public transport buses run from CIT.

Bus # 5 – Run from CIT campus via Melbourne Road, Model Farm Road and Western Road with a stopover at St. Patrick Street to Cork’s Kent Train station.

Bus # 19 – Runs from CIT campus, Curraheen Road, Bishopstown Road and has a stop at Wilton Shopping Centre and the TESCO. Cork University Hospital (CUH) is also there.

## 8. VISA INFORMATION

Students from non-EU countries are usually required to apply for an Irish **student** visa in order to enter into the state. The up-to-date information regarding how to apply for the student visa and what documents are required is mentioned in the following page of Irish Naturalisation and Immigration Service website:

<http://www.inis.gov.ie/en/INIS/Pages/WP07000018>

You can find address of Irish embassy in your country at this link below:

<http://www.dfa.ie/home/index.aspx?id=285>

### Documents required for visa:

- Your original Passport
- Offer letter from the TEC Centre
- Academic Credentials



## 9. GROCERY SHOPS FOR VEGETARIANS

There are some grocery shops available in the Cork city for vegetarians particularly from South East Asia.

- O'Hare – Adjacent to the Dunnes Store, Bishopstown
- Asian Food Shop – North Main Street, City Centre.
- Jannat Food Shop – Shandon Street Cork
- Ayesha Spice – Shandon Street Cork

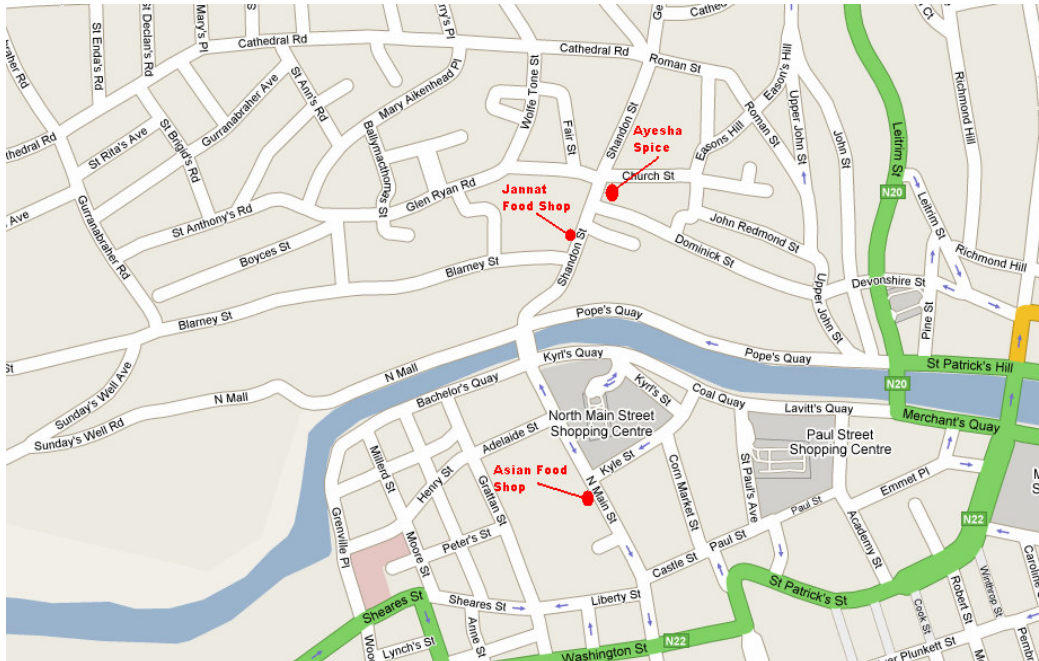


Figure 5: Vegetarian Groceries Stores in Cork City

For more information contact Mr. Hassan Naqvi, [hassan.naqvi@cit.ie](mailto:hassan.naqvi@cit.ie).